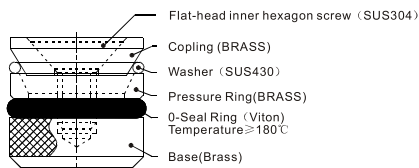
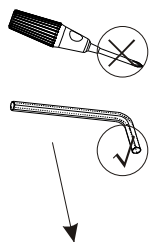


## Cooling Circuit Plugs



Code	Outer ( $\phi$ ) +0-0.1	Length (mm)	Wrench (mm)	Volt Stainless	Proper Torque (kgf/cm)	
DTW06	6	11.0	2	M2.5	12~13	
DTW08	8	11.0	2.5	M3.0	21~22	
DTW09	9	11.0	3	M4.0	34~35	
DTW10	10	11.0	3	M4.0	34~35	
DTW12	12	11.0	3	M4.0	34~35	

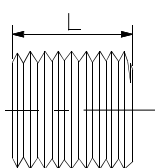
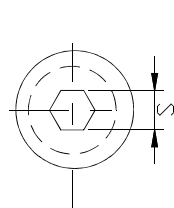
Code     ×     QTY  
DTW06   ×   100PCS



### Feature:

- 1.Flat-head inner hexagon screws instead the flat-head cross-screw to increase the required installation and disassembly force.
- 2.The base with the embossing are useful for avoid revolving when the cooling plugs be installed or disassembled.
- 3.The interface between the O-ring and the base is also treating with embossing process. It is processed to avoid revolving when them hold down.

## Brass Pressure Plugs



Code	Nominal Size 1 (standard)	Nominal Size 2 ( special )	L	S	
BBP-10	1/8 NPT	1/8 BSPT	.250	3/16	
BBP-20	1/4 NPT	1/4 BSPT	.406	1/ 4	
BBP-40	3/8 NPT	3/8 BSPT	.406	5/16	
BBP-60	1/2 NPT	1/2 BSPT	.531	3/ 8	
BBP-100	3/4 NPT	3/4 BSPT	.531	9/16	
BBP-140	1 NPT	1 BSPT	.656	5/ 8	

Code     /     NPT     ×     QTY  
BBP-10   /   NPT     ×   100PCS